

# PUBLIC NOTICE

## FOR THE ATTENTION OF: CLIMBERS, DRONE OPERATORS AND COAST USERS

**Climbers and users of the coastal area are reminded that the Chasms and Sugarloaf Rock are home to many nesting birds during the months of Spring and Summer.**

Climbers, coast users and drone operators attention is drawn to the IOM Wildlife Act 1990 which makes it an offence for any person to intentionally or recklessly:

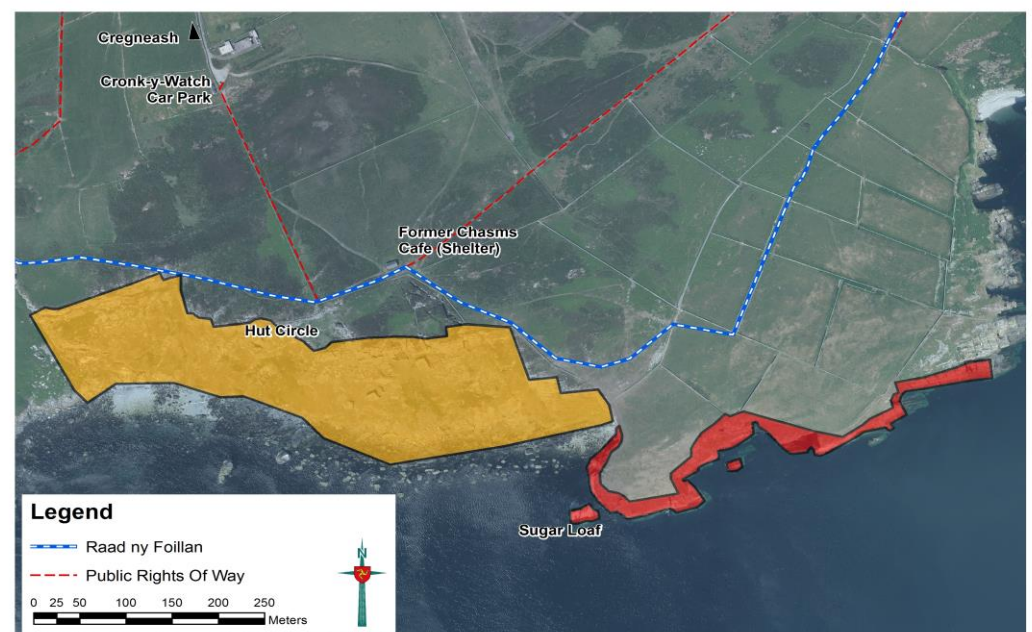
- Disturb any wild bird included in Schedule 1 whilst it is building a nest or is in, on or near a nest containing eggs or young; or
- Disturb any nest or egg of such a bird; or
- Disturb dependant young of such a bird

In order to protect nesting birds from disturbance the closed periods for climbers are shown on the map below.

■ No climbing or drones from 1st March to 1st August

■ No climbing or drones from 1st March to 1st September

Please beware birds may be affected by Avian Influenza. This area may be closed in the event of an outbreak.



Manx National Heritage  
Isle of Man Charity no. 603