

# Meayll Hill

The Meayll stone circle stands near to the top of Meayll Hill overlooking the south of the island. This stone circle is thought to date from late Neolithic times (4000 - 2000 BC).

The Meayll Circle is a chambered cairn, which is actually a burial monument for people who lived here a long time ago.

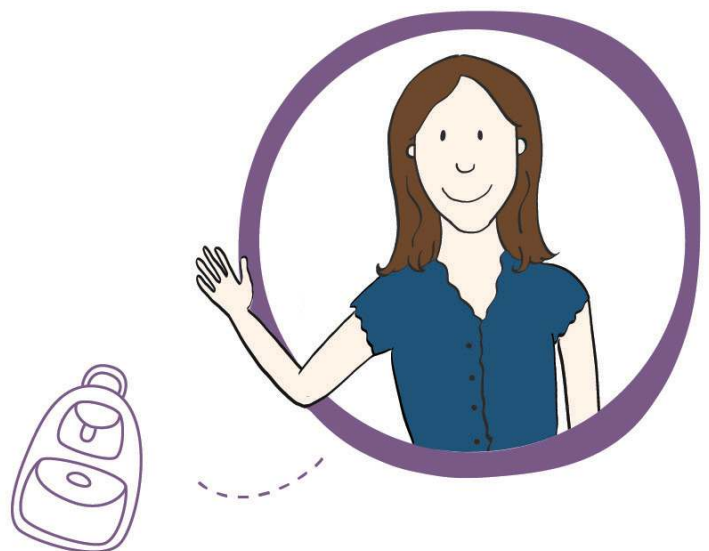
The Manx Gaelic name of this structure is *Rhullick-y-lagg-shliggagh*, which translates to 'the graveyard of the valley of broken slates', and the term 'Meayll' means 'bald'!

Pieces of pottery, burnt bones, flint tools, and white quartz pebbles have all been found in the burial chambers and can be seen on display in the archaeology gallery at the Manx Museum.

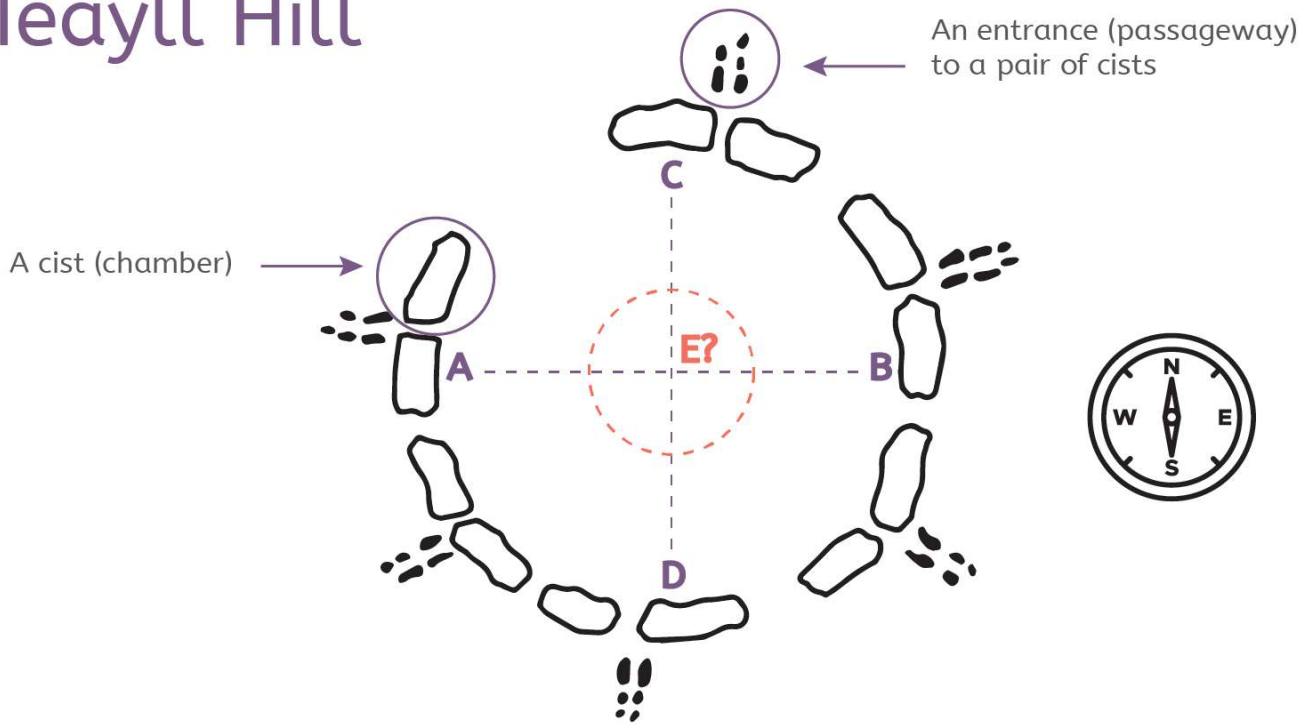
To complete the Meayll Hill activity on the next page you will need -

## MY LIST

- Non slip shoes
- A 3-metre measuring tape
- A compass  
(this could be on a parent/guardian's phone)
- Pencils
- A feel for adventure!



# Meayll Hill



- 1 Position yourself with your compass so that you are facing **North**
- 2 Measure from point **A** (West) to point **B** (East). The measurement (also known as **diameter**) in metres and centimetres of the stone circle from point **A** (West) to point **B** (East) is \_\_\_\_\_
- 3 Now measure from point **C** (North) to point **D** (South). The diameter in metres and centimetres of the of the stone circle point **C** (North) to point **D** (South) is \_\_\_\_\_
- 4 The stone circle is made of **6 pairs** of smaller chambers called **cists**. How many cists in total are visible in the whole monument? \_\_\_\_\_
- 5 Draw a sketch of one of the **cist pairs and its passageway** below.
- 6 Draw a sketch of the **missing part** (labelled **E**) in the monument. What is it? \_\_\_\_\_



Draw the cists and passageway



Draw part **E** the megalith mystery object

